



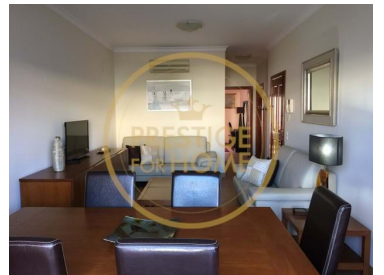
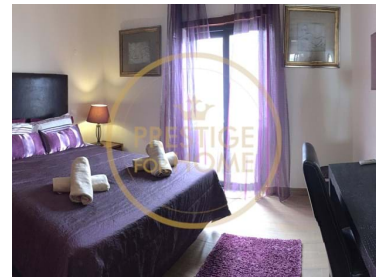
1027-1403

Reference

Scan the QR code to view the property



Quarteira - Apartment



N/A
CLASSE
ENERGÉTICA

2
Bedrooms

1
Bathrooms

99
Area (m²)

158
Land Area (m²)

1 100 € / Month
(EUR €)

WINTER STAY RENTALS - MARCH MAY25 Monthly fee + expenses

WINTER STAYS FOR RENT - MARCH TO 24 MAY25

Monthly fee 1100€ + expenses (water, electricity, gas and internet)

This 2 bedroom apartment Quarteira is located in the center of Quarteira, on a pedestrian street with plenty of commerce, very close to the Market and Quarteira Beach. Guests can walk to the cafés and restaurants in the area.

This 2 bedroom apartment Quarteira includes 2 bedrooms one with a double bed and the other with 2 single beds, 1 bathroom, living and dining room, a kitchen, also includes a balcony for outdoor dining and barbecue. It has air conditioning in the living room and bedrooms. Beach umbrella and accessories available for guest use.



Lídia Cruz

961706562 ² · 289410040 ¹

info@prestigeformhome.pt

T +351 289 410 040 ¹ · T +351 961 706 562 ² · E info@prestigeformhome.pt

Praça da República n.º 72 R/C Esq. 8100-269 Loulé
AMI 8436

¹ (Call to national fixed network) | ² (Call to national mobile network)



1027-1403

Reference

Scan the QR code to view the property



Equipment

The kitchen is equipped with a stove, oven, fridge, microwave, washing machine and dishwasher and all the necessary equipment for meals.

This accommodation is fully equipped with everything you need for your holiday.
It has free WIFI

This apartment provides towels and bed linen.

Capacity: 4 people

October –April – 600€/week

May - 700€/ week

October to May 24th - 1100€/month

Security deposit

We request the payment of €1100 security deposit, this amount must be paid by bank transfer up to the 7th day before Check-In and will be returned by the 7th day after Check-Out if the property and equipment are as they were delivered to guests. At Check-In you will be asked and it will be essential to deliver proof of transfer of the security deposit. Please note that these conditions do not include the possibility of bringing pets without prior authorization, in which the absence of this may imply the cancellation of the reservation.

A Municipal Tourist Tax may be charged, if it is in force.

Nº93073/AL



Lidia Cruz

961706562 ² · 289410040 ¹

info@prestigeforhome.pt

T +351 289 410 040 ¹ · T +351 961 706 562 ² · E info@prestigeforhome.pt

**Praça da República n.º 72 R/C Esq. 8100-269 Loulé
AMI 8436**

¹ (Call to national fixed network) | ² (Call to national mobile network)



1027-1403

Reference

Scan the QR code to view the property



Property Features

- Equipped kitchen
- Built year: 2009
- Views: Sea views
- Solar orientation: South, East
- Furnished
- Proximity: Airport, City
- Roof terrace
- Energetic certification: Exempt
- AL Licence number: 93073



Lidia Cruz

961706562 ² · 289410040 ¹

info@prestigeforhome.pt

T +351 289 410 040 ¹ · T +351 961 706 562 ² · E info@prestigeforhome.pt

Praça da República n.º 72 R/C Esq. 8100-269 Loulé
AMI 8436

¹ (Call to national fixed network) | ² (Call to national mobile network)