



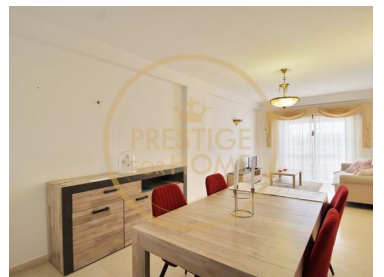
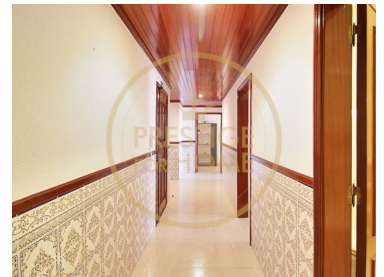
1027-1413

Reference

Scan the QR code to view the property



São Gonçalo de Lagos - Apartment



2
Bedrooms

1
Bathrooms

144
Area (m²)

590 € / Week
(EUR €)

HOLIDAY RENTALS - 2 bedroom apartment located next to Canavial Beach

HOLIDAY RENTALS

Boasting garden views, 2 Bedroom Apartment is located around 1.7 km from Canavial Beach.

The apartment is fully equipped with everything you need for your holiday, it has 2 bedrooms, a flat-screen TV and a fully equipped kitchen with a microwave, a fridge, a washing machine, an oven and a hob.

The apartment has a balcony with good areas that allows you to have a dining table.



Lídia Cruz

961706562 ² · 289410040 ¹

info@prestigeformhome.pt

T +351 289 410 040 ¹ · T +351 961 706 562 ² · E info@prestigeformhome.pt

Praça da República n.º 72 R/C Esq. 8100-269 Loulé
AMI 8436

¹ (Call to national fixed network) | ² (Call to national mobile network)



1027-1413

Reference

Scan the QR code to view the property



Popular places of interest nearby include: Lagos Zoological Park, Dona Ana Beach, Ponta da Piedade Lighthouse, Camilo Beach, Centro Ciência Viva de Lagos, Santa Maria Church and Lagos Marina. The nearest airport is Faro Airport, 64 km from the accommodation.

This apartment provides towels and bed linen.

Capacity 6 people

January – June – 590€/week

July 1st fortnight – 650€/week

July 2nd fortnight – 750€/week

August – 850€/week

September 1st Fortnight – 700€/week

September 2nd Fortnight – 650€/week

October – December – 590€/week

Security Deposit

We request the payment of €400 security deposit, this amount must be paid by bank transfer up to the 7th day before Check-In and will be refunded until the 7th day after Check-Out if the property and equipment are as they were delivered to the guests. At Check-In, you will be asked and will be required to provide proof of transfer of the security deposit. Please note that these conditions do not include the possibility of bringing pets without prior authorization, in which the absence of this may result in the cancellation of the reservation.

A Municipal Tourist Tax may be charged, if it is in force.

No. 111895/AL



Lídia Cruz

961706562 ² · 289410040 ¹

info@prestigeforhome.pt

T +351 289 410 040 ¹ · T +351 961 706 562 ² · E info@prestigeforhome.pt

Praça da República n.º 72 R/C Esq. 8100-269 Loulé

AMI 8436

¹ (Call to national fixed network) | ² (Call to national mobile network)



1027-1413

Reference

Scan the QR code to view the property



Property Features

- TV
- Proximity: Airport, Beach, Golf course, City, Hospital, Public Transport
- Built year: 1999
- Roof terrace
- Pantry
- Quiet Location
- Energetic certification: Exempt
- Mains water
- AL Licence number: 111895
- Furnished
- Equipped kitchen
- Garden
- Conservatory
- Views: City view, Urbanization view
- Main drainage
- Accessibility\proximity: Airport 1 hour, Golf course 5km, City nearby, Touristic areas, Beach at 5m
- Solar orientation: East
- Balcony
- Rental licence



Lídia Cruz

961706562 ² · 289410040 ¹

info@prestigeforhome.pt

T +351 289 410 040 ¹ · T +351 961 706 562 ² · E info@prestigeforhome.pt

Praça da República n.º 72 R/C Esq. 8100-269 Loulé
AMI 8436

¹ (Call to national fixed network) | ² (Call to national mobile network)