



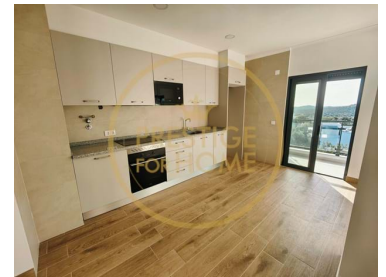
1142-41

Reference

Scan the QR code to view the property



Loulé (São Clemente) - Apartment



2
Bedrooms

2
Bathrooms

110,9
Area (m²)

340 000 €
(EUR €)

Apartment 2 Bedrooms NOVO Loulé

Excellent apartment 3rd floor, new construction in the center of Loulé, Algarve.

Modern construction equipped with air conditioning, barbecue, and spacious balconies.

Open Space (living room / kitchen) dispenses, with two bathrooms and interior parking in the garage prepared with charging of electric cars.

Excellent location, practically in the center of Loulé, all kinds of amenities and services 30 minutes from Faro Airport.

Energy efficiency: A



Carlos Jorge & Diogo Antunes - Equipa CJDA

911100757 / 914776227 ²

cjda@prestigeforhome.pt

T +351 289 410 040 ¹ · T +351 961 706 562 ² · E info@prestigeforhome.pt

Praça da República n.º 72 R/C Esq. 8100-269 Loulé
AMI 8436

¹ (Call to national fixed network) | ² (Call to national mobile network)



1142-41

Reference

Scan the QR code to view the property



Property Features

- Built year: 2023
- Drive way
- Video entry system
- Double glazing
- Pantry
- Internet connection available
- Parking space
- Accessibility\proximity: Bus station, Airport 30m, Airport 1 hour, Airport 2 hours, Beach at 30 min, Beach at 1 hour, Commercial areas, Restaurants, Golf course 5km, City nearby, Mountain, Touristic areas, Cinema, Theater, Bicycle path
- Mains water
- Gas: Main grid
- Floors: 4
- Storage / utility room
- Lift
- Electric shutters
- Quiet Location
- Central location
- Barbecue
- Energetic certification: A
- Balcony
- Terrace



Carlos Jorge & Diogo Antunes - Equipa CJDA

911100757 / 914776227 ²

cjda@prestigeforhome.pt

T +351 289 410 040 ¹ · T +351 961 706 562 ² · E info@prestigeforhome.pt

**Praça da República n.º 72 R/C Esq. 8100-269 Loulé
AMI 8436**

¹ (Call to national fixed network) | ² (Call to national mobile network)