



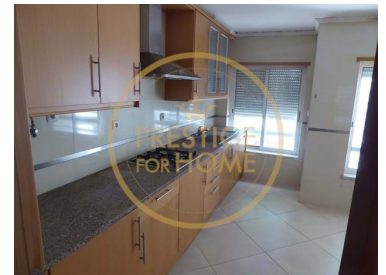
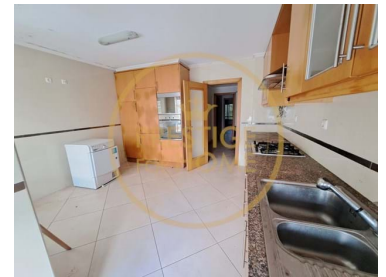
1088-196

Reference

Scan the QR code to view the property



Loulé (São Clemente) - Apartment



3
Bedrooms

2
Bathrooms

154,3
Area (m²)

154,3
Land Area (m²)

Garage

285 000 €
(EUR €)

apartment 3 Bedrooms, Loulé

3 bedroom apartment, with parking space, located on the ground floor. Comprising entrance hall, kitchen, 3 bedrooms, 2 bathrooms, 1 of them private and living/dining room. Inserted in a building of 5 floors, with a total of 105 square meters, with good areas. Although it needs some "pampering" to



Carlos Antonio

929147974 ²

carlosantonio@prestigeforhome.pt

T +351 289 410 040 ¹ · T +351 961 706 562 ² · E info@prestigeforhome.pt

Praça da República n.º 72 R/C Esq. 8100-269 Loulé
AMI 8436

¹ (Call to national fixed network) | ² (Call to national mobile network)



1088-196

Reference

Scan the QR code to view the property



Property Features

- Washing machine
- Fitted wardrobes
- Laminated floor
- Proximity: Airport, Beach, Golf course, Shopping, Restaurants, City, Open field, Hospital, Pharmacy, Public Transport, Schools, Public Swimming Pools, Playground
- Garden
- Floors: 5
- Roof terrace
- Views: Urbanization view
- Lift
- Electric shutters
- Main drainage
- Parking space
- Accessibility\proximity: Museums, Bus, Bus station, Airport 30m, Airport 1 hour, Beach at 30 min, Commercial areas, Restaurants, Golf course 5km, City nearby, Mountain, Touristic areas, Cinema, Theater, Ruins with touristic views, Marina, Bicycle path
- Solar orientation: East, West
- Gas: Main grid
- Dishwashing machine
- Equipped kitchen
- Air conditioning pre installation
- Garden
- Built year: 2007
- Drive way
- Basement
- Video entry system
- Double glazing
- Electric garage gate
- Quiet Location
- Hydrotherapy Bath
- Energetic certification: D
- Mains water
- Garage



Carlos Antonio

929147974 ²

carlosantonio@prestigeforhome.pt

T +351 289 410 040 ¹ · T +351 961 706 562 ² · E info@prestigeforhome.pt

Praça da República n.º 72 R/C Esq. 8100-269 Loulé
AMI 8436

¹ (Call to national fixed network) | ² (Call to national mobile network)